

iTalkie™/RG: advanced radio gateway

Multi-function bridge to Motorola MOTOTRBO™ 2-way radios

Bridge 2-way radios to the IP world!

You can use this gateway by itself and as part of a dispatch system.

Standalone operation:

- Record voice calls and text messages
- Exchange emails with radios
- Use radios as pagers: dispatch text alerts received over RS232 from SCADA or other equipment
- Telephone interconnect with phone call recording
- Export GPS data to other applications (e.g. webtracker@trbo, CES Wireless, Transloc, custom)
- Handle emergency notifications to make phone calls or send email

As part of a dispatch solution, in conjunction with the iTalkie/DS console or iTalkie thin client:

- Users of radios and computers can communicate between each other
- Employees can use their PCs to talk and send messages to others on their radios
- Track radio assets via GPS
- Handle emergency notifications with visible and audible notifications

Install this software on a PC, connect it with only a simple cable (no special hardware) to a Motorola MOTOTRBO™ radio and in minutes you are ready to exchange calls and text with radios!

A true Swiss army knife!

iTalkie™/RG is a unique product in the MOTOTRBO ecosystem because of its scalability and its ability to support multiple different systems – at the same time!

For instance, it has been used to interface MOTOTRBO radios nursecall systems, SCADA/PLC controllers, weather alerts, 3rd party AVL systems.

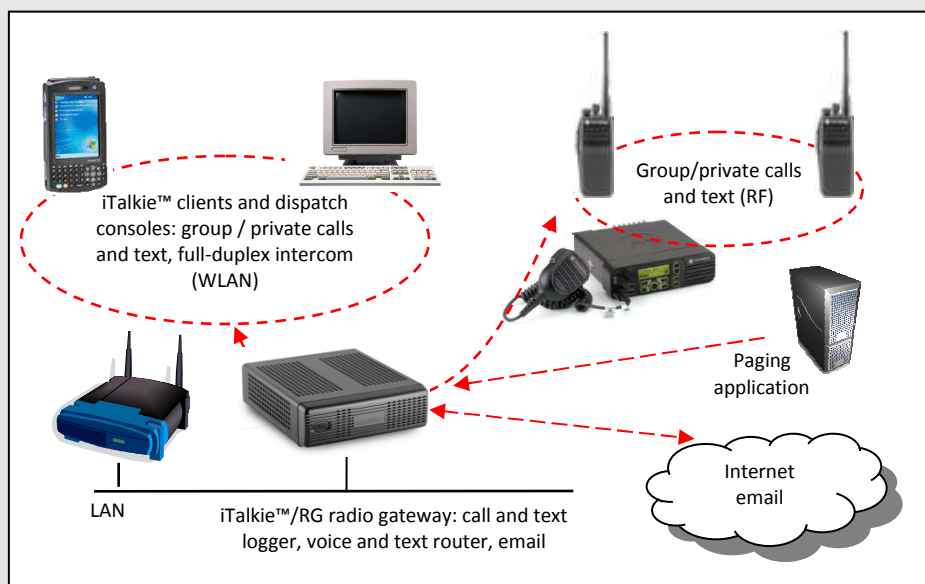
Its distributed email capability allows it to be used to exchange email with systems that have radios in different locations, frequency bands and even MOTOTRBO architectures (e.g. conventional, IPSC, Capacity Plus+ and LCP).

Selected Features

- Group and private calls between mobile radios and handhelds or PCs
- Cross-patch calls to different IP clients, gateways or even networks
- Group and private text messages between radios and handhelds or PCs
- Supports ARS with aliases
- Supports location services (GPS)
- Phone interconnect to radios
- 2-way email gateway tested with hospitality applications
- Record all voice and text traffic
- Compatible with paging applications
- Rapid deployment
- Direct interface to Motorola MOTOTRBO™ or analog radios
- Small footprint, low CPU usage
- Requires Windows XP/7/8 PCs

Typical Applications:

- Warehousing / Manufacturing
- Retail
- Hospitality
- Education
- Public utilities
- Chemical plants
- Government
- Rural public safety



iTalkie™/Radio Gateway – multi-modal multi-connection gateway

Selected Features

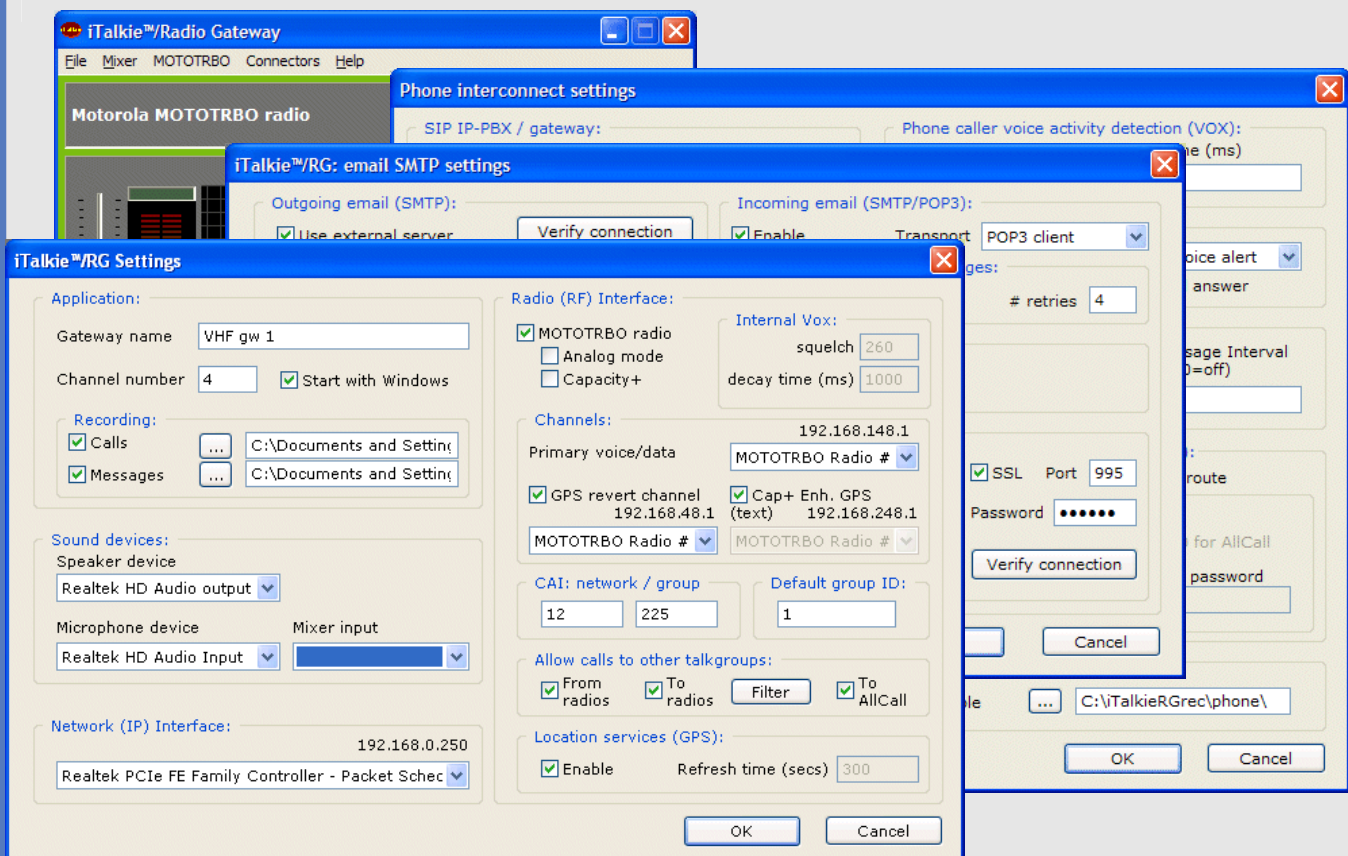
- One to many (1:M) and one to one (1:1) half-duplex voice
- One to many (1:M) text messages
- Route calls to/from any radio talkgroup
- Radio presence (ARS) with aliased names
- Support location-based services (GPS) and export to other applications/servers
- Configurable telephone interconnect
- Cross-patch to route calls to different IP targets and even networks
- Emergency notifications to emails, phone calls and dispatchers
- Caller-ID support
- Recording of group/private calls, text messages and phone calls
- Forward alert messages to radios and consoles from paging applications via serial (TAP, COMP2), TCP (COMP2) and custom interfaces
- Email gateway with SMTP/POP3 support
- Support both radio sharing and multi-radio dispatch
- Low-latency HD quality and clear voice between the IP devices
- MOTOTRBO™ radio channel control, front LED display and audio levels
- Thin gateway with IP network load optimization
- And so much more!

Compatibility and Requirements

- MS Windows XP/ 7/8 PC
- Any PC sound card: built-in or add-on (e.g. USB)
- Free USB port
- Any TCP/IP wired or wireless LANs
- Supports data revert and Enhanced GPS

Professional services:

- Customizations available for special requirements



TABLETmedia, Inc.
3035 Scott Street
San Francisco, CA 94123
Tel: +1 (415) 567-8100

<http://www.tabletmedia.com> - 3/14
Copyright © 2001-2014 TABLETmedia, Inc. – All rights reserved.
TABLETmedia eztracker@trbo™, phone@trbo™, text@trbo™,
iTalkie™ and iFon™ are trademarks of TABLETmedia, Inc.
All other trademarks belong to their respective companies.